

A decorative graphic on the left side of the page features a vertical column of five interlocking gears. The top and bottom gears are dark grey, while the middle three are a light sage green. From each gear, a thick arrow extends horizontally to the right. The top and bottom arrows are dark grey and curve upwards and downwards respectively before becoming straight. The middle three arrows are light sage green and are straight. The background is a textured, aged paper with faint gear patterns on the left.

**LET'S WORK TOGETHER**

**PeopleFund**  
Creating Opportunity

**2011 ANNUAL REPORT**



PEOPLESFUND CREATES ECONOMIC OPPORTUNITY AND FINANCIAL STABILITY FOR UNDERSERVED PEOPLE BY PROVIDING ACCESS TO CAPITAL, EDUCATION AND RESOURCES TO BUILD HEALTHY SMALL BUSINESSES

Dear Friends and Supporters,

Our annual report theme is "Let's Work Together". It represents the power of a collective effort for the common good. Nelson Mandela put it best when he said, "by working together, we can build the country of our dreams". Our mission and our work are based on the notion that we can build a better world for our clients, their families, the people they care about, their communities, and Texas.

Texas is home to over 2.1 million businesses with five or fewer employees. This represents almost 90% of all businesses in our state. If just one out of three businesses hired a single employee, we would be at full employment. This illustrates the collective influence of small businesses. PeopleFund, and others with similar missions, strive to make Texas a better place to do business "one loan at a time". The focus is on the underserved, but deserving business owners. In this report, you will learn about a few outstanding clients that exemplify the enduring allegiance to our noble mission.

2011 was a transition year for PeopleFund:

- In addition to central Texas, we began statewide lending with high impact loans in Brownsville, Bryan, Channelview, Dallas, Fort Worth, Galveston, Garland, Georgetown, Houston, Killeen, Livingston, Mansfield, Missouri City, San Antonio, Stockdale, and Tyler.
- We were certified by the SBA as a Micro Lending Intermediary and a SBA 7A Community Advantage lender, creating additional opportunities for small disenfranchised businesses.
- We were selected by the U.S. Treasury Department as a recipient of Small Business Loan Fund (SBLF) program capital.
- We were among one of only 21 CDFI's chosen for the Goldman Sachs Growth Collaborative.
- We strengthened the quality of our balance sheet by focusing on our loan portfolio quality and increasing reserves.

The net effect of these actions is that we are better positioned to help more small Texas businesses. So, let's work together to create opportunity. Let's work together to change lives. Let's work together to make 2012 an even better year for Texas. Let's work together!

Gary Lindner  
President and CEO

Jack McDonald  
Board Chair



# AWARENESS

## WORKING TOGETHER WITH **FRIENDSHIP OF WOMEN**

“To see the transition of the facilities that we are able to provide to the women and children in this community, it is awesome. It really is.”

– Eva Woodfin, Board Chair



### **IN THE BEGINNING:**

Friendship of Women began its work in the movement to end domestic violence in 1978.

### **FRIENDSHIP OF WOMEN PROVIDES:**

Typical victims of domestic violence require temporary shelter, counseling and legal advocacy—all services that the Friendship of Women staff provides.

### **PLANS FOR NEXT YEAR:**

In the next year, Friendship of Women plans to expand to provide 2,500 victims of domestic violence with support and counseling, a much more achievable goal with the increased space their new building offers.

### **SUMMARY:**

Friendship of Women Inc. provides emergency shelter, individual counseling and support groups to 8,000 domestic violence and sexual assault victims annually in Brownsville, Texas. The organization has been a part of this community since opening the doors to their emergency shelter in 1978. The goal is simple: end the intimate partner violence that 1 in 4 women experience in their lifetime. The staff and volunteers at Friendship of Women Inc. do more than provide a safe place for victims and their families. They serve as a resource for their community with a 24-hour hotline, legal advocacy and intervention programs. Friendship of Women, Inc. also works to prevent more women from becoming victims by raising awareness in the community. The staff and volunteers lead focus groups at local high schools about healthy relationships, as well as training and workshops at area businesses to start a dialogue in the community about domestic and sexual violence.

### **IMPACT:**

Friendship of Women Inc. had outgrown its administrative building in 2010 when they came to PeopleFund for a loan. Their existing facility was 1,800 square feet and not large enough to host support groups, therapy services and administrative staff at the same time. The Board chair, Eva Woodfin, had already heard ‘no’ twice before from banks for a loan because of their nonprofit status. After contacting PeopleFund, she worked with Ivette Benitez to get the funding she needed to purchase a 5,900 sq. ft. office building a few miles from the shelter. This space has two large multipurpose rooms to host support groups, an intimate room for therapist visits, a daycare facility and two secure doors for victims to enter and exit. The new building is also more convenient for the clients due to its proximity to easily accessible public transit. Because of the \$208,000 loan that PeopleFund provided, Friendship of Women Inc. was able to move into their new building in October and has already used it serve more than 1,900 victims and their families.



## SERVICE

## WORKING TOGETHER WITH HAMMONS DENTAL

“PeopleFund’s loan helped me update the equipment in my office, making me much more efficient and provide better care to my patients.”

– Dr. Travis Hammons, Dentist and Small Business Owner



### PLANNING FOR THE FUTURE:

Dr. Hammons plans to open a second office and medical complex in the next five years.

### GIVING BACK TO THE COMMUNITY:

Dr. Hammons and his staff have raised over \$30,000 via their Smiles for Life children’s charity campaign.

### MILITARY WORK ETHIC:

Dr. Hammons credits his military experience with teaching him the dedication and work ethic that has made him a successful business owner.

**SUMMARY:** Dr. Travis Hammons had just finished serving a 15-month tour of duty in Iraq when he came to PeopleFund for a loan in 2011. In Iraq, he had provided dental care to troops serving on the front lines in Iraq. He earned an Army Commendation Metal for his outstanding work. When he returned, he knew that he wanted to open his own family dental practice in Austin. He purchased an office from a retiring dentist, but the equipment was 20 to 30 years old. To update the dental equipment, he needed capital. Although turned down for a bank loan, the banker referred him to PeopleFund, which extended a \$100,000 loan to Dr. Hammons to help jumpstart a now thriving practice and fulfill a mission to empower returning veterans to create stable careers for themselves and others.

**IMPACT:** Dr. Hammons has since expanded from two to six dental assistants and serves 1,600 patients and families. His new equipment has made him more efficient, see more patients each day and provide better care. He strives to be a community leader since opening his own business. His office sponsored self-help author and life coach Rory Vaden to speak to Pflugerville High School students and community members about the power of self-discipline, with all of the proceeds from the event going to Pflugerville High School’s extracurricular programs. His office participates in the Smiles for Life campaign, raising money for children’s charities with teeth bleaching procedures. When a patient comes to Dr. Hammons for a teeth bleaching procedure, 100 percent of the patient’s fee is donated to the campaign. To date, it has raised more than \$30,000 thanks to dentists like Dr. Hammons.



## LEADERSHIP

# WORKING TOGETHER WITH OSIRUS INC.

“We came to PeopleFund because we needed to purchase the equipment to fulfill our contracts and expand our business.”

– Bill Aleman, Vice President and Chief Financial Officer

### ZERO WASTE POLICY:

Osirus Inc. is currently pursuing a ‘Zero Waste’ policy to turn the waste from the military bases into jet fuel.

### FOUR LOCATIONS:

Osirus Inc. has additional facilities in Austin, Houston, San Angelo and Abilene.

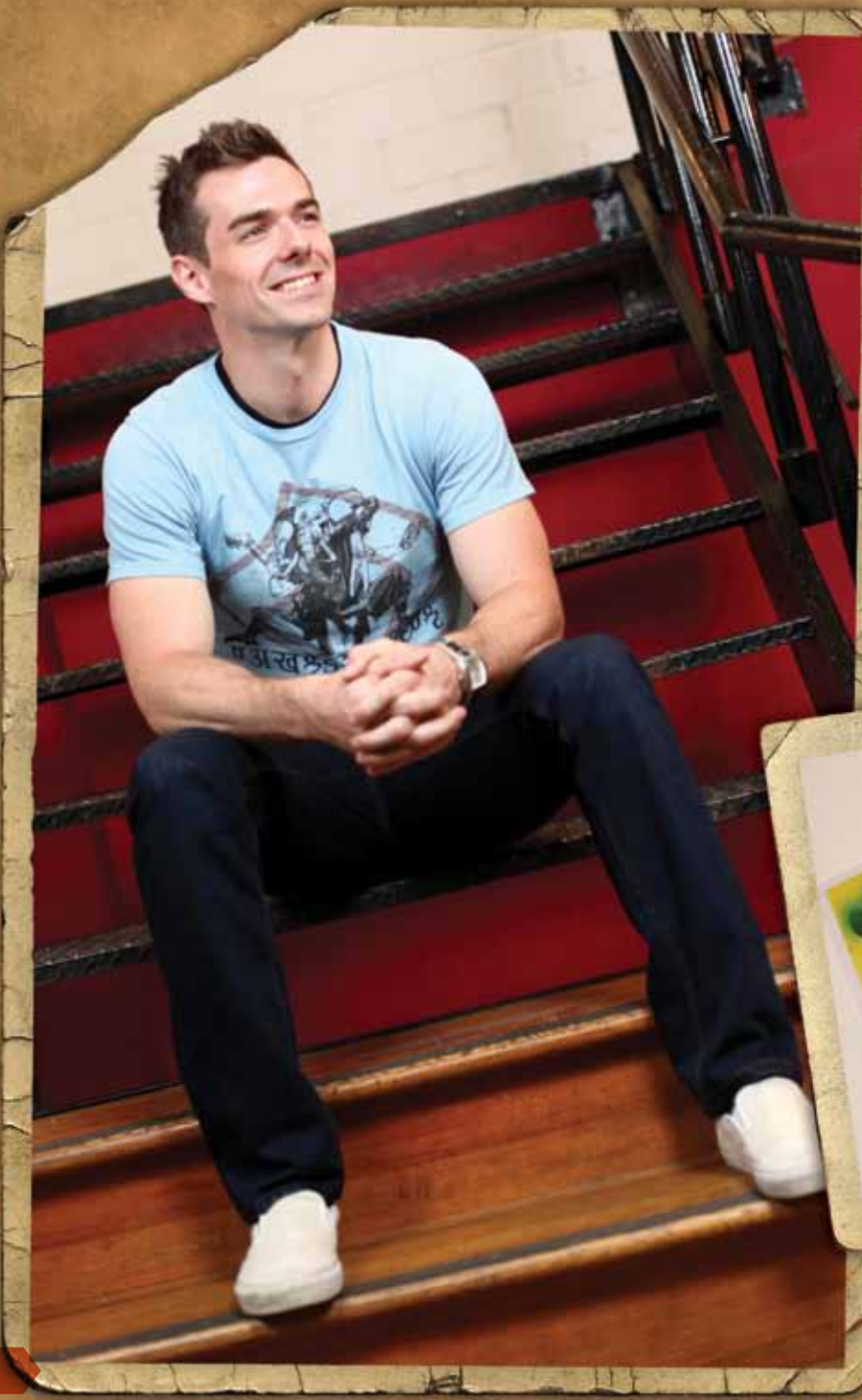
### RECYCLING REMINDERS:

Osirus Inc. hands out brochures, necklaces and piggy banks at Air Force bases to encourage service members to take advantage of Osirus Inc.’s recycling opportunities.

**SUMMARY:** James Aleman started Osirus Inc. in 1998, prepared every meal himself in his San Antonio kitchen and then served the food to local charter and private schools. The formula was a success. In its 14-year history, Osirus Inc. has handled the contract for more than 70 organizations throughout Texas, including private and charter schools, military bases and healthcare facilities. In addition to making a profit, James wanted to be a leader in the community. His company provides scholarships to disadvantaged students at local high schools, donates money to the schools where they work and participates in Earth Day events to promote recycling. After these successes, the Aleman family saw the potential for the company to diversify their offerings, so James expanded to sustainable waste management for local military installations. Osirus Inc. received their first contract in November 2010 at Goodfellow Air Force Base near San Angelo, Texas.

**IMPACT:** Just one month later, Osirus Inc. was awarded huge recycling contract for recycling and waste management at four military bases and a medical center in San Antonio. This contract meant the Aleman family needed working capital to purchase equipment. However, because of the financial challenge of running a small business, there was not enough cash to purchase the equipment. This is where PeopleFund came in. People Fund’s lending team helped Osirus through the process to secure a \$130,000 loan. Osirus Inc. purchased thousands of garbage and recycling containers. Osirus Inc. was able to fulfill its four contracts and continues to expand and offer more services to other military bases, charter schools and healthcare facilities.





# SUSTAINABILITY

## WORKING TOGETHER WITH THE NAKED DESIGNER

“Other lenders wouldn’t even answer my calls, but Lesa at PeopleFund believed in what I was doing right away when I didn’t feel like anyone else did.”  
– Bryan Joseph, Founder

### LOCAL AND ALL NATURAL:

All the t-shirts are printed locally with all-soy natural inks.

### MUSIC FEST & CHARITY RUN BRANDING:

Bryan Joseph tries to make it to music festivals and charity runs around the state to promote the Naked Designer brand.

### AN HONEST EXPRESSION:

The Naked Designer motto is “An Honest Expression,” reflecting its commitment to 100 percent organic and natural clothing with an artistic purpose.

**SUMMARY:** Bryan Joseph was an unemployed architect when he founded The Naked Designer in 2011 in Austin, Texas. As a LEED-certified architect, he was often frustrated by the inability to apply the sustainability principles he had pursued during his education. He wanted to use the creative skills cultivated as an architect and the ideas about protecting the environment. Eventually, he founded an apparel company that produces 100 percent organic cotton T-shirts with his original designs. He spent three weeks on the first design, the T-shirt he is pictured in. It’s called the “Wushu Hindu,” an Asian-inspired design that reads “The Naked Designer” in Hindi across the bottom. Bryan sells designs through an e-commerce site, uses a local printer and strives to make the best choices for his bottom line and the environment in decisions about his business. He purchases only organic cotton T-shirts from wholesalers and found a way to reduce waste when he ships his T-shirts. Many companies use cardboard boxes or plastic bags, but Bryan worked with a local country club to get used tennis ball containers to ship his T-shirts all across the country.

**IMPACT:** He came to PeopleFund for a loan in 2011 to start The Naked Designer. To ramp up production and fill orders, he needed to buy inventory, set up a website and purchase promotional items. Only needing \$9, 000, he came to PeopleFund and Lesa Cox, Director of Lending, who supplied the funding Bryan needed to start his business. Bryan experienced tremendous success and wants to expand the business more in the next year and make The Naked Designer a model of sustainability from manufacturing to shipping. Even though a relatively new business owner, he donates a portion of every sale to local nonprofits and community organizations. A true philanthropist, he plans to give back to the community by helping local musicians promote their work at conventions and community events where Bryan sells his shirts.

# ACCESSIBILITY

## WORKING TOGETHER WITH **COMMUNITY CARS**

“PeopleFund is an amazing organization that helped make my dream possible.”  
– Stacy Zoern, CEO Community Cars



### **HARBINGER FOR THE FUTURE:**

Before the first car was built in Pflugerville, Community Cars Inc. had already received 700 orders for the Kenguru.

### **PLANS FOR THE FUTURE:**

The company plans to manufacture 500 to 1,000 cars per year.

### **COMPARISON PRICING:**

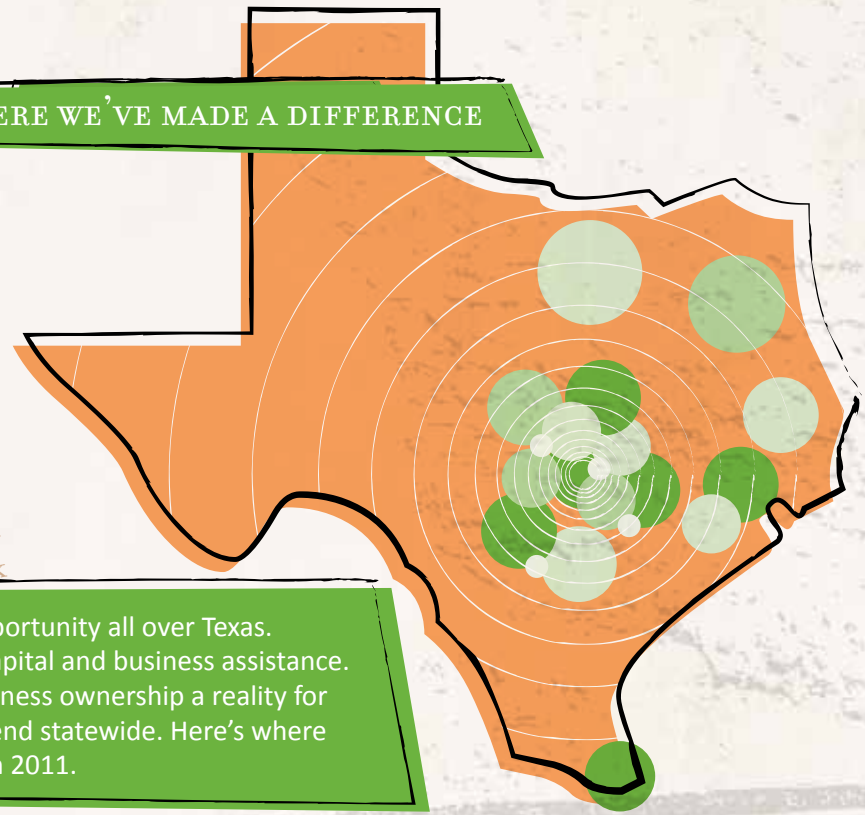
Outfitting a car with the accommodations necessary for a wheelchair-bound driver costs \$50,000 to \$60,000, compared to the Kenguru’s price tag of \$20,000.

**SUMMARY:** Stacy Zoern has been confined to a wheelchair her entire life. As a University of Texas Law School graduate and patent law attorney, it never stopped her from getting where she wanted to go in her career. However, the independence and mobility of driving stopped her from living the fulfilling and accessible life she wanted. She knew that retrofitting a normal car with the accessories necessary for a wheelchair-bound driver would cost \$80,000. In 2010, she discovered the Kenguru, a Hungarian-made car that allows wheelchair-bound drivers to open doors via remote control enter through a ramp into the back and drive using a joystick or motorcycle-like handlebar. These low-speed electric vehicles are also environmentally friendly. When she contacted the company, she was told that the cars were no more. The Hungarian economy was hit hard and funding had dried up. Within days, Stacy started lining up funders to move the manufacturing operation to Pflugerville, Texas. As a startup she was a red flag for traditional lenders and other CDFIs.

**IMPACT:** PeopleFund saw the potential for Stacy’s business to change the lives of disabled people worldwide. Stacy came to PeopleFund in 2011 and was provided two months of operating funds to build her first cars and hire 17 full-time employees. One of those employees, Community Cars’ executive assistant Jennifer Byers, needed help with the financial accounting of the growing operation. Allen Rogers, PeopleFund’s Business Assistance and Education Manager, set her up with Quickbooks expert, Ken Owens—one of the many volunteer mentors in PeopleFund’s One-to-One Mentoring program. Ken helped her through Quickbooks software, resolved payroll and tax issues and gave her advice about day-to-day accounting needs of a growing operation. In January 2012, Stacy and her team unveiled the first U.S.-made Kenguru at a grand opening and announced the first bulk order from a dealer in France. She plans this to be the first of thousands of cars so that wheelchair-bound members in communities across the globe can enjoy the freedom and independence that the Kenguru brings.

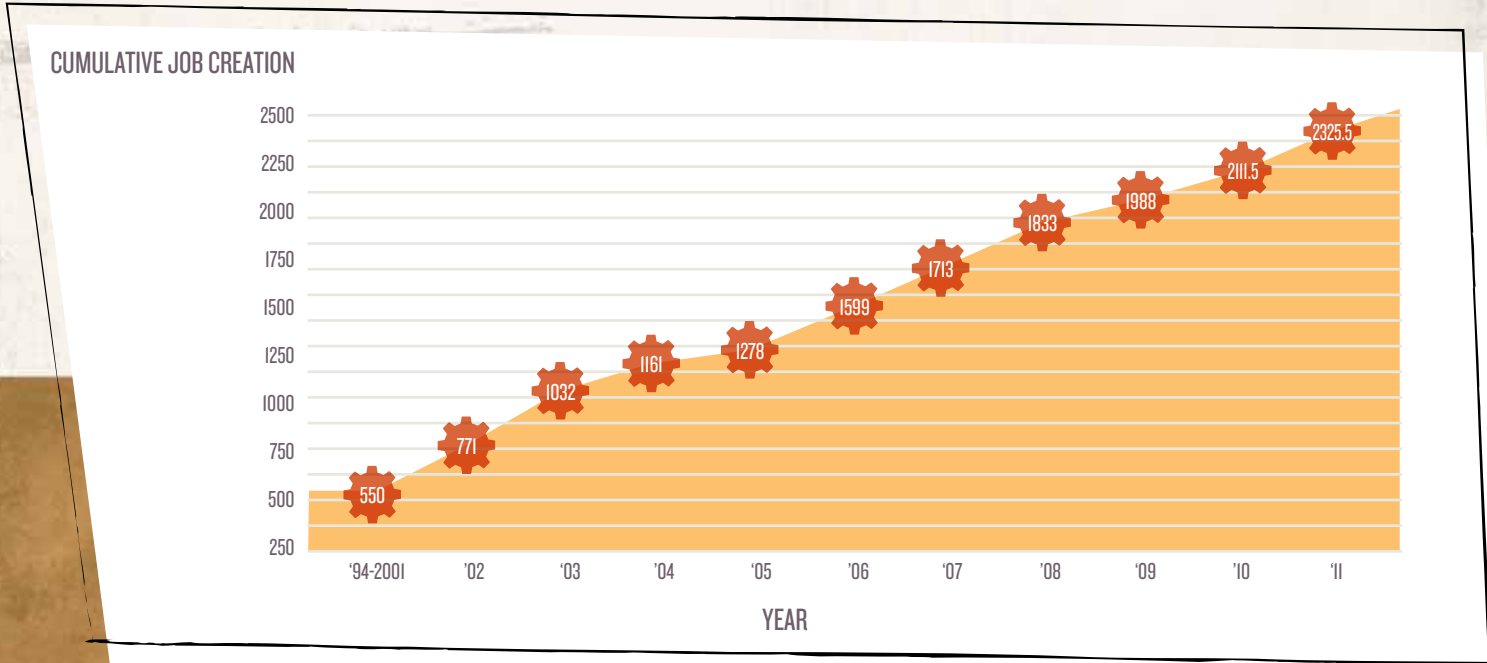
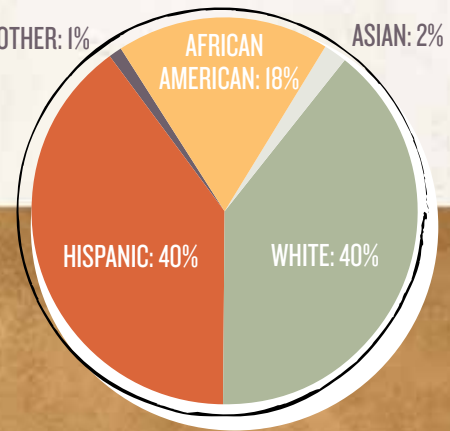
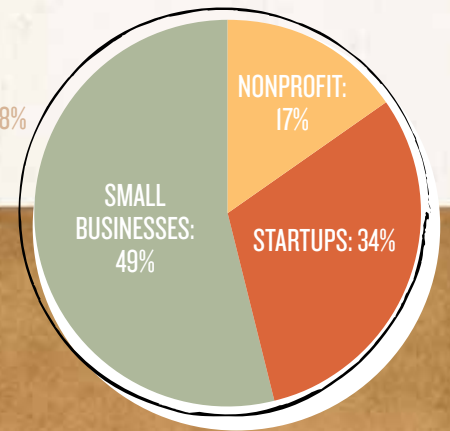
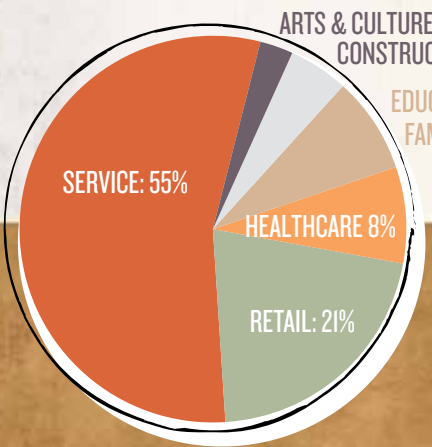
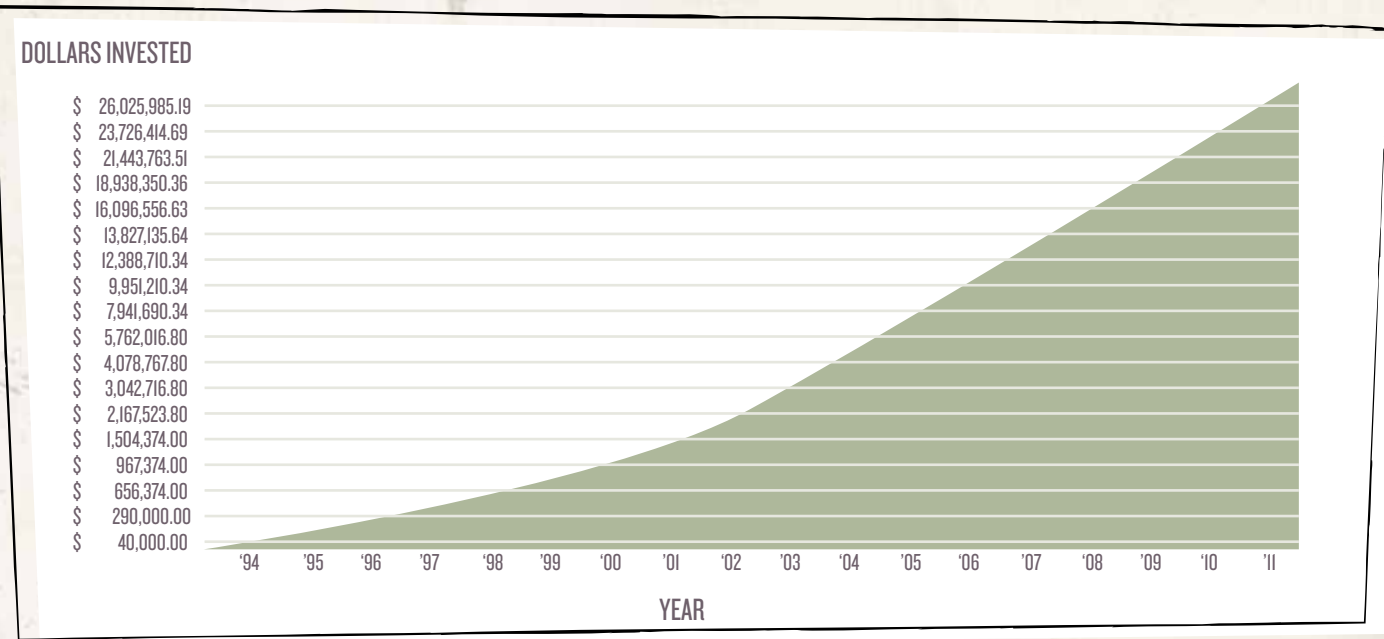
75701 tyler  
 75702 tyler  
 76022 bedford  
 76116 fort worth  
 76542 killeen  
 77520 baytown  
 78160 stockdale  
 78230 san antonio  
 78238 san antonio  
 78259 san antonio  
 78521 brownsville  
 78641 leander  
 78642 liberty hill  
 78654 marble falls  
 78664 round rock  
 78664 round rock

**WHERE WE'VE MADE A DIFFERENCE**



78701 austin  
 78702 austin  
 78702 austin  
 78702 austin  
 78703 austin  
 78704 austin  
 78704 austin  
 78704 austin  
 78704 austin  
 78704 austin  
 78722 austin  
 78731 austin  
 78739 austin  
 78741 austin  
 78750 austin  
 78750 austin  
 78750 austin  
 78754 austin  
 78755 austin  
 78755 austin  
 78759 austin  
 78759 austin

PeopleFund creates opportunity all over Texas. We provide access to capital and business assistance. To help make small business ownership a reality for more Texans, we now lend statewide. Here's where we made a difference in 2011.





**PEOPLEFUND CELEBRATED COMMUNITY IN 2011 WITH A NUMBER OF NEW PROGRAMS**



PEOPLETALK ECONOMIC SUMMIT:  
ASHTON CUMBERBATCH, EMCEE



2011 COMMUNITY  
VOLUNTEER:  
KATIE FALCOUST



2011 COMMUNITY ADVOCATE:  
KARIN AND GARY GERSTENHABER



JUNIOR ENTREPRENEURSHIP TRACK (JET):  
MIRIAM DELGADO AND JONATHAN NOBLES



EAST NIGHT:  
ADRIAN NEELY,  
BOARD VICE CHAIR,  
& HARRIETTA NEELY



TOP SEED BUSINESS  
PLAN COMPETITION:  
PUNTO VERDE



PEOPLETALK SPEAKER SERIES: JOHN PAUL DEJORIA



2011 COMMUNITY IMPACT AWARD:  
WORKER'S DEFENSE PROJECT



BUSINESS EDUCATION WORKSHOPS:  
ROSALBA SOTELO

**BY THE NUMBERS**

Financial Statements

	2011	2010
<b>ASSETS</b>		
Cash	\$1,493,755	\$544,564
Restricted Cash	439,168	
Receivables and Other Assets	2,455,987	2,792,149
Fixed Assets	3,186,846	3,272,928
Other Real Estate Owned	59,150	65,000
Loans Receivable Net of Allowance	5,308,169	5,920,985
<b>Total Assets</b>	<b>\$12,943,075</b>	<b>\$12,595,626</b>
<b>LIABILITIES AND NET ASSETS</b>		
Current Liabilities	\$150,033	\$228,907
Long Term Liabilities	5,798,134	4,800,000
Net Assets	6,994,908	7,566,719
<b>Total Liabilities and Net Assets</b>	<b>\$12,943,075</b>	<b>\$12,595,626</b>
<b>STATEMENT OF ACTIVITIES</b>		
<b>REVENUES</b>		
Program Income	\$1,116,419	\$762,898
Interest on Cash and Investments	28,041	68,487
Contributed Income	866,348	646,985
<b>Total Revenues</b>	<b>2,010,808</b>	<b>1,478,370</b>
<b>EXPENSES</b>		
Program Expense	1,540,707	1,930,460
Fundraising Expense	262,617	234,779
General and Administrative Expense	361,438	161,003
<b>Total Expenses</b>	<b>2,164,762</b>	<b>2,326,242</b>
Infrequent Items	(417,857)	1,678,928
<b>CHANGE IN NET ASSETS</b>	<b>\$(571,811)</b>	<b>\$831,056</b>

# WHO WE ARE

# WHO WE HELP

# WHO WE COULDN'T DO WITHOUT

## STAFF

Gary Lindner – President and CEO  
 Will Kelly – CFO  
 Amy Golub – Director of Underwriting  
 Lesa Cox – Director of Lending  
 Amber Cooney – Development Manager  
 Allen Rogers – Business Assistance and Education Manager  
 Shay Erickson – Office Manager  
 Ardina Washington – Loan Administrator  
 Limari Valez – Customer Service Representative  
 Christine Flores – Loan Processor  
 Ivette Benitez – Underwriter  
 Matthew Stewart – Underwriter  
 Allie Cook – Loan Officer  
 Marisol Montoya – Loan Officer, Dallas  
 Jacqueline Rodriguez – Office Manager, Dallas

## INTERNS

Ryan Dang  
 Rachel Nitschke  
 Kim Tran

## BOARD FELLOWS MCCOMBS SCHOOL OF BUSINESS, MBA PROGRAM

Shawn McCormack  
 Caroline Kolb

## BOARD OF DIRECTORS

**Jack McDonald**  
 Board Chair, PeopleFund  
 CEO & President, Silverback Acquisition Corporation  
**Cloteal Davis Haynes**  
 Former Board Chair, PeopleFund  
 Principal, Haynes-Eaglin-Waters  
**Adrian Neely**  
 Vice Chair, PeopleFund  
 Principal, Triad Building Maintenance/C&D Recycling

**Pat O'Beirne**  
 Treasurer and Secretary, PeopleFund  
 Senior Vice President, Regions Bank  
**Irvin Ashford, Jr.**  
 Board Member, PeopleFund  
 Senior Vice President—Texas Market,  
 Comerica BankCommunity Development and  
 External Affairs Director  
**Kathy D. Burrell**  
 Board Member, PeopleFund  
 Senior Vice President,  
 Bank of America Merrill Lynch  
**Mike Cook**  
 Board Member, PeopleFund  
 Owner, Cook, Brooks, Johnson PLLC  
**Barrett R. Howell**  
 Board Member, PeopleFund  
 Attorney, K&L Gates LLP  
**D. Bryan Jones**  
 Board Member, PeopleFund  
 CEO, Collider Media  
**Don Kendrick**  
 Board Member, PeopleFund  
 President of Central Texas Region,  
 Wells Fargo Bank  
**Laura Mathieu**  
 Board Member, PeopleFund  
 Regional Executive, Capital One Bank  
**Anna Sanchez**  
 Board Member, PeopleFund  
 Senior Business Relationship Manager, Wells  
 Fargo Bank  
**Randi Shade**  
 Board Member, PeopleFund  
 Former City Council Member, City of Austin  
**F. Gary Valdez**  
 Board Member, PeopleFund  
 Principal, Focus Strategies Investment Banking  
**Eugene Sepulveda**  
 Board Chair Emeritus, PeopleFund  
 CEO, Entrepreneurs Foundation of  
 Central Texas

## CURRENT CLIENTS

Advanced Performance Automotive  
 Center  
 Alamo Central Market  
 Alls Fair Towing Service  
 Anjoorian Silks  
 Austimpactors, LLC  
 Austin American Awning  
 Austin Gay And Lesbian International  
 Film Festival, Inc.  
 Austin Gymnastics Academy, LLC  
 Austin Lumber Company  
 Austin Mint For Beauty, LLC  
 B.I.T. Construction  
 Badgerdog Literary Publishing, Inc.  
 Be My Cupcake  
 Bennu Coffee  
 Biao  
 Blu Ribbon  
 Boondocks Tavern  
 Branches Pediatric Therapy  
 Bulverde Beverage Company  
 Christian Arts & Entertainment Group  
 Church Of God 7th Day  
 Cinthya LLC  
 Community Cars  
 Compassion Consulting &  
 Distribution, LP  
 Congregacion Elim, Inc. (cog7 Day)  
 Corporate Wellness Solutions  
 Counter Culture Restaurant  
 D & G Designs Store  
 Data Vise Information Technology  
 Day & Night Waters  
 Debre Hile Saint Raguele Ethiopian  
 Tewahdoo Church  
 Dedicated Medical Transportation  
 Ducan-Foster LLC  
 Ecology Action Of Texas  
 El Otro Lado  
 Elite Auto Repair  
 Emancipet  
 Empower School  
 Escuelita del Alma  
 Evans Engine Exchange  
 First Bingo Cooperative Assoc., Inc  
 Frameworks CDC  
 Friendship of Women  
 G&G Autobody, Inc.  
 Greater Mount Moriah Baptist Church  
 GRIDbot, LLC  
 Growing Imaginations  
 Hammons Family Dental, PC  
 Hands of Healing Residential  
 Treatment Center  
 Houston Kiddie Express  
 Hydro Innovations, LLC  
 Intductive Applications  
 Integrity Automotive  
 InterCity Carriers LLC  
 Jaime's Auto Repair  
 JH Deliverance Inc.  
 JS Window Cleaning  
 Juan In A Million Mexican Restaurant  
 Knowbility  
 Kyle Jones Insurance  
 LavaWash Laundry  
 Live Oak Brewing Co.  
 Logan Chiropractic &  
 Wellness Center, Inc.  
 Looking Good Masonry  
 Lucky J's Restaurant  
 Margarita's Tortilla Factory  
 Mary Lee Foundation  
 Max and Charlie Four  
 MBC Wallcoverings & Paint, Inc.  
 Metaland Corporation  
 Mike Russell BookKeeping and  
 Tax Services  
 Mothership Books and Games  
 Nazca Plains Corporation  
 Objects of Confection  
 Origen Biodmedical, Inc.  
 Osirus, Inc.  
 Peacock Salon  
 Pope Insurance Group, LLC  
 R2G & P Properties  
 Rit, Inc.  
 Rosy In Home Services, Inc.  
 S.V. Texas Cooler  
 Safe Haven Adolescent Home  
 Salvage Vanguard Theater  
 Scrubtopia Medical Outfitters  
 Seventeen Eleven Ventures  
 Simply Blissful  
 Sonance Rehearsal Studios  
 St. Luke's Missionary  
 Baptist Church  
 Sterling Classical School, Inc.  
 Stone Magen Cleaning Services  
 Paul Cliff  
 Keith Ann Clotiaux  
 Carlo Cucina  
 John Daves  
 Scott Derber  
 Steve Dyer  
 Robert Elder  
 Anneliese Ellerton  
 James Epsy  
 Jason Esdorn  
 Kathy Estes  
 Tom Evans  
 Denise Fleming  
 Paul Freehill  
 Gary Gerstenhaber  
 Karin Gerstenhaber  
 Richard Glasco  
 Gregory Goecken  
 Patsy Gomez  
 Joanna Gonzalez  
 Lucia Guillen-Cruz  
 Ritesh Gupta  
 Rosemary Guzman  
 Anne Hallock  
 Kim Herrington  
 Amanda Huyck  
 Daniel Kang  
 Rachel Knox  
 Rick L'Amie  
 Philip Lerma  
 Derek Lewis  
 Ram Matta  
 Dennis McClintock

## 2011 VOLUNTEERS

MamiSerwaa Amoakohene  
 Ana Arriaga  
 Fares Bagh  
 Seth Barnett  
 Rc Beall  
 Margarine Beaman  
 Mike Berg  
 Lori Biesterfeldt  
 Rick Buckner  
 Clay Butler  
 Eugene Chausovsky  
 Sundar Chidambara  
 Paul Cliff  
 Keith Ann Clotiaux  
 Carlo Cucina  
 John Daves  
 Scott Derber  
 Steve Dyer  
 Robert Elder  
 Anneliese Ellerton  
 James Epsy  
 Jason Esdorn  
 Kathy Estes  
 Tom Evans  
 Denise Fleming  
 Paul Freehill  
 Gary Gerstenhaber  
 Karin Gerstenhaber  
 Richard Glasco  
 Gregory Goecken  
 Patsy Gomez  
 Joanna Gonzalez  
 Lucia Guillen-Cruz  
 Ritesh Gupta  
 Rosemary Guzman  
 Anne Hallock  
 Kim Herrington  
 Amanda Huyck  
 Daniel Kang  
 Rachel Knox  
 Rick L'Amie  
 Philip Lerma  
 Derek Lewis  
 Ram Matta  
 Dennis McClintock  
 Scott McCoy  
 Sara McCuiston  
 Janna Meyer  
 Adam Morehead  
 Carol Morse  
 Efrain Moya  
 Paul Murillo  
 Jason Myers  
 Lisa Nguyen  
 Dag Nybo  
 Mark O'Brien  
 Lance Oditt  
 Kim Oliver  
 Ken Owens  
 Rob Patrick  
 Kim Penna  
 William Penny  
 Eliza Platts-Mills  
 Lee Potts  
 Josh Rabinowitz  
 Greg Reher  
 Mike Russell  
 Sumaya Saati  
 Eugenio Saenz  
 Geob Saenz  
 Jessica Sager  
 Gloria Santos  
 Mark Schiff  
 Pam Scoma  
 Charmane Sellers  
 Shirley Sheffield  
 Crystal Skolnick  
 Michael Smith  
 Russell Smith  
 Rosalba Sotelo  
 Jordan Spears  
 Ryan Steglich  
 Donna Taylor  
 Joe Terracina  
 Maura Thomas  
 Sarah Touns  
 Meg Tynan  
 Monica Walters  
 Ed Walts  
 Matthew Wedgwood  
 Adam Wilk  
 Celena Williams

## INDIVIDUAL CONTRIBUTORS

Kathleen Bencken  
 Rick Buckner  
 Suzanna Caballero  
 Edwina Carrington  
 Riley Carruthers  
 Adam Chong  
 Keith Ann Clotiaux  
 Mike Cook  
 Daniel Davis  
 Elizabeth Davis  
 John & Rhonda Dirvin  
 Constance Dykhuizen  
 Frances Ferguson  
 Michael Gatto  
 Karin and Gary Gerstenhaber  
 Rebecca Getter  
 Amy Golub  
 David Graham  
 Doug Hartman  
 David Hartman  
 Donna Hoffman  
 Bobby Inman  
 William Kelly  
 Sarah Koeninger  
 Joe Lam  
 Gary Lindner  
 Joyce McDonald  
 Philip Moody  
 Laura Morrison  
 Robert and Janis Nagelhout  
 Patrick O'Beirne  
 Deena Perkins  
 Mickey Powell  
 Saretta Ramdial  
 Andrew Sams  
 Eugene Sepulveda  
 Kyle Spears  
 Chelsea Staires  
 Carl and Claire Stuart  
 Earl Swisher  
 F. Gary Valdez  
 Ardina Washington  
 Scott Way  
 Kelly Weiss

## BUSINESS CONTRIBUTORS

ACCION Texas  
 ACE Custom Tailors  
 Alamo Draffhouse  
 Austin Community College  
 Austin Involved  
 AVP Management Services, Inc.  
 Balcones Recycling, Inc.  
 Bank of America  
 BBVA Compass  
 Birds Barbershop  
 Blanton Museum of Art  
 Camino Real Ventures  
 Capital One Bank  
 Castle Hill Specialized Fitness  
 Chaparral Ice Center  
 Cielo Water  
 City of AustinComerica  
 Dr. Pea's Active Health Center  
 Emma S. Barrientos Mexican  
 American Cultural Center  
 Frost National Bank  
 Greater Texas Federal Credit Union  
 Greenling  
 Hoboken Pie  
 Hotel San Jose  
 HousingWorks  
 IBM  
 JPMorgan Chase  
 Lonestar Riverboat  
 Live Oak Brewery  
 Live Oak Pharmacy  
 Myo Massage  
 Montemayor Hill & Company  
 Opportunity Finance Network  
 Prosperity Bank  
 Sage Advisory Services  
 Salvage Vanguard Theater  
 Southwest Strategies Group  
 SWBC  
 Tapestry Dance Company  
 Texas Capital Bank  
 The Highball  
 The Personnel Store

The Thompson Group  
 Thinkwell Corporation  
 Tool and Instruments  
 Uchi  
 United Way Capital Area  
 urbanspace Realtors  
 USAA Federal Savings Bank  
 Wells Fargo Bank  
 Whole Foods  
 Women and Their Work Gallery

## FOUNDATION CONTRIBUTORS

Foundation Contributors  
 Boucher Family Foundation  
 F.B. Heron Foundation  
 Levit Family Fund  
 MFI Foundation  
 Mueller Foundation  
 Shield-Ayres Foundation

## INVESTORS

Alice K. Head  
 Austin Community Foundation  
 Bank of America  
 BBVA Compass  
 Capital One Bank  
 Carl and Claire Stuart  
 First Citizens Bank  
 Greg and Mari Marchbanks Family  
 Foundation  
 Matthew Kaufmann and Holly Bell  
 Shield-Ayres Foundation  
 Wells Fargo Bank  
 Friends Meeting of Austin



**LET'S WORK TOGETHER**



**PeopleFund**  
Creating Opportunity

2921 E. 17TH STREET BUILDING D, SUITE 1 AUSTIN, TX 78702  
PHONE: 512.472.8087 FAX: 512.472.8191 [PEOPREFUND.ORG](http://PEOPREFUND.ORG)